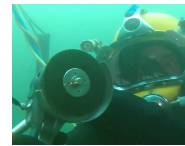


## Gasoline High Pressure Unit

36 LPM @ 240 bar

The gasoline engine driven HDMP240\_36 high pressure unit is designed to provide cleaning speed at 240 bar cavitation cleaning with the CW350 and ROV lances to remove marine life and instable coatings. The solid, stand-alone, 4 wheeled cart has a gasoline engine and is compatible with double CW300's, CW350, SR450, SR600, all ROV lances and all underwater tools.



## Specifications

**Compatible with:** Double CW300's, CW350, CW202ROV, CW303ROV, SR450, SR600, All Underwater Tools

**Max. Pressure:** 240 bar (3,480 psi)

**Max. flow:** 36 LPM (9.5 GPM)

**Power:** 22HP Honda gasoline engine

**Weight:** 150kg (330 lbs)

**Dimensions:** 100x82x85cm  
(39.4x32.3x33.5")

## Features

- Removes medium fouling, debris, corrosion and instable coatings
- Drives all underwater tools
- Electric start
- Heavy duty, 4 wheeled cart
- Manual pressure valve
- Readily serviceable water filter
- Automatic decelerator to reduce RPM in the bypass phase
- No engine-oil safety device
- Motor thermal protection
- Hour counter